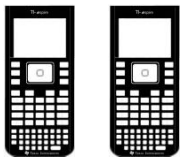


# Exit Press to Test

Press to Test (P2T) mode is a secure environment used during assessments to disable specific features of the TI-Nspire™ handheld calculator series. To exit P2T the device **must** be connected to either another handheld that is **not** in P2T or to a computer that has the TI-Nspire software installed.




## Calculator to Calculator

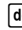
**Step: 1.** Connect the two calculators using the unit to unit cable.

**Step: 2.** Switch both calculators on.

**On the calculator with P2T enabled:**

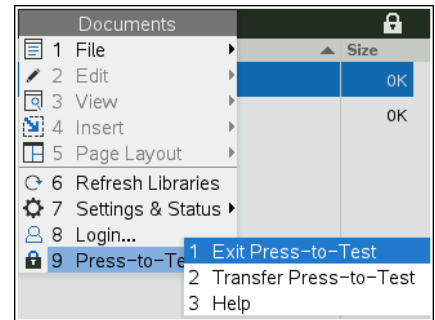
**Step: 3.** Navigate to the home screen.  on

**Step: 4.** Select: **My Documents** or **Browse** (Option 2)

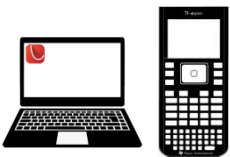
**Step: 5.** Press the document key 

**Step: 6.** Navigate to: **Press to Test** (Option 9)

**Step: 7.** Select: **Exit Press to Test** (Option 1)



The calculator in Press to Test mode will shut down. All documents created whilst in P2T will be deleted, including the current document. The calculator will restart and normal calculator functionality will resume.



## Computer to Calculator [Student Software]

**Step: 1.** Launch the TI-Nspire student software.

**Step: 2.** Connect the calculator to the computer using the USB cable supplied.

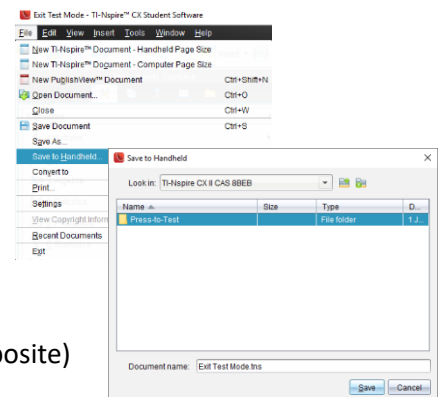
**On the TI-Nspire student software:**

**Step: 3.** Create a New blank document. (Calculator Application only)

**Step: 4.** From the **File** menu, select **Save to Handheld**

**Step: 5.** Select the calculator and navigate to the Press-to-Test folder (opposite)

**Step: 6.** Save the blank document as: **Exit Test Mode**



The calculator will shut down. All documents created whilst in P2T will be deleted, including the current document. The calculator will restart and normal calculator functionality will resume.

**Note:** Teachers can use the Prepare Handhelds tool in the TI-Nspire Premium Teacher software to disable P2T on multiple handhelds using either the Transfer Tool or the TI-Navigator™ system.

